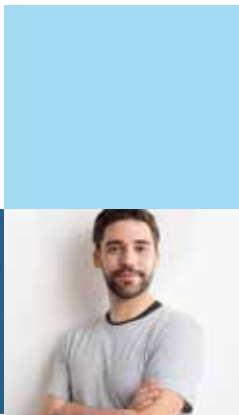


KaVo ESTETICA® E30

# You will love it.



KaVo. Dental Excellence.

# KaVo ESTETICA® E30 – everything your heart desires, within your reach.

## KaVo ESTETICA E30 – looks good, feels excellent.

The KaVo ESTETICA E30 opens a new dimension of Dental Excellence: the essence of high KaVo quality, reliability and efficiency at affordable entry level pricing.

Easy and intuitive to use, safe and economical to operate. This treatment unit combines convenience and efficiency as part of your daily workload.

## Clever technology and a love for detail.

Each detail of the KaVo ESTETICA E30 is aimed at efficiency, flexibility and ease of use. The perfectly matched components ensure cost-efficient operation with high reliability. The integrated service functions lead to low costs and operational safety.

*Large range of motion for your individual treatment style – the table version of the KaVo ESTETICA E30.*



## Charming and versatile – it's your perfect match.

The KaVo ESTETICA E30 offers two lines of accessories: the Essential Line with high quality basic configuration and the Evolution Line for even higher demands.

Select also between two variants: Regardless of whether you choose the table or the swing arm version – the KaVo ESTETICA E30 adapts optimally and reliably to your treatment style.

### Table version – Enjoy more personal space.

The compact dentist element offers freedom of movement for your individual treatment procedures and a healthy and natural posture. The integrated display affords a good view of all functions of your dentist element.

### Swing-arm version – Easy access to your handpieces.

The perfectly balanced handpieces are immediately and safely positioned in your hand. The generous length of the handpiece tubings gives you the flexibility to position your dentist element where it is most convenient to you.

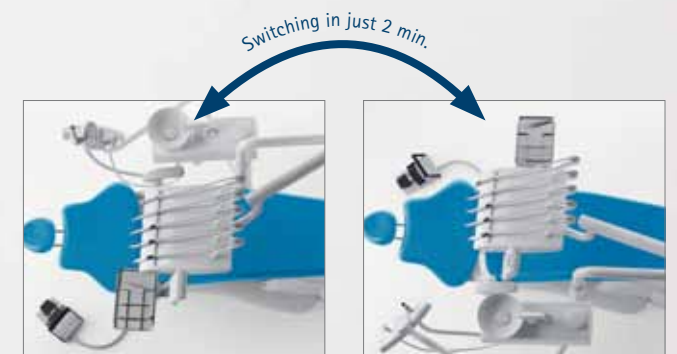
*Always in reach – the swing-arm version of the KaVo ESTETICA E30.*



## Fully adaptable to your needs.

Being left-handed is always difficult where the world is made for right-handed people. Therefore, the KaVo ESTETICA E30 is designed as a treatment unit that is equally well-suited for both sides. The KaVo ESTETICA E30 can optionally be switched easily in less than two minutes from left-to-right or right-to-left-handed operation.

The KaVo ESTETICA E30 is a reliable partner, in the office, the clinic, university or wherever you're based.



*Ideal for right-handed operator ...*

*... and for left-handed operator.*



# Start looking forward to your next treatment.

## Trust your intuition – your dentist element does.

Everything is located on your dentist element where you would intuitively expect it to be. The operating concept is clear and simple. Use direct buttons and the simple KaVo colour scheme to control handpieces, patient chair and illumination both rapidly and easily.

The dentist element can be individually configured according to your technical needs. For this, the Essential Line offers proven quality with the micro motor INTRA LUX KL 701 and efficient tooth cleaning with the comfortable Scaler PIEZOsoft. Enjoy even more comfort with the Evolution Line with the small, brushless micro motor INTRA LUX KL 703 LED with optional endo function and the PiezoLED scaler for high-precision and effective tooth cleaning.

Each line offers five individually configurable handpiece holders and one tray holder which can be installed either on the right or left side of the unit.

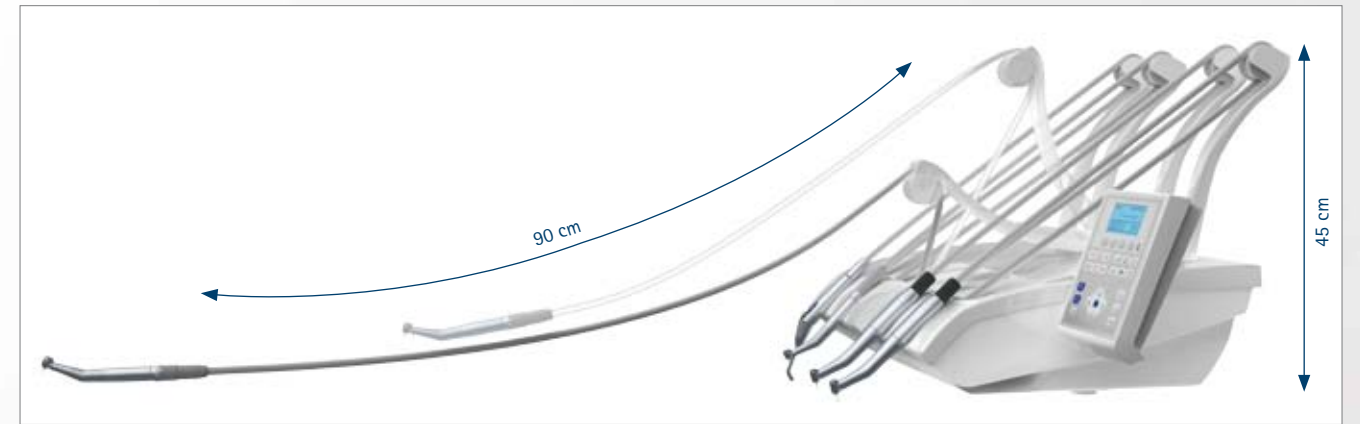
*The dentist element can be configured individually and is easy to use.*

## Dentist element and configuration – Your advantages at a glance:

- Easy control of functions thanks to the direct buttons and intuitive film keypad
- All information available at a single glance on the integrated display
- Rapid treatment procedures and relaxed posture since you have to reach over short distances only



*Whether you have the table or the swing-arm version: place your dentist element where it is most convenient for you.*



*Ergonomic features for every treatment: low table height of just 45 cm, well-balanced swing-arm clamp and maximum extraction length of the handpiece hoses of 90 cm.*

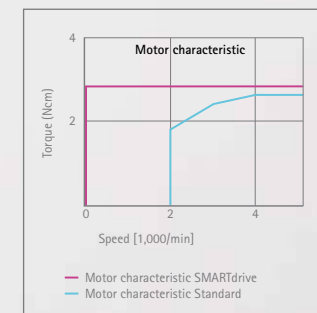
## Perform your treatments however you want.

Regardless of whether you sit or stand during treatments: the dentist element of the KaVo ESTETICA E30 supports you through its ergonomic features.

The table version and the swing-arm version alike are based on an ergonomic concept and offer flexible positioning options for easy, trouble-free and efficient treatment procedures.

## With SMARTdrive, you get the hang of it.

Precise, efficient, and time-saving working conditions are produced by the new standard SMARTdrive motor control, with full torque and particularly vibrationfree startup characteristics, even in the low speed range of 100 rpm. Due to the broader speed range, all straight and contra-angle handpieces may now be used in a more versatile manner, which extends the range of applications of each handpiece.



*Use the high torque and vibration-free start-up characteristics of your KaVo SMARTdrive with its extended speed range of 100 – 40,000 rpm to your advantage.*

## Experience flexibility – in all your treatments.

The generous extraction length of the handpiece tubing offers freedom of movement, the integrated locking mechanism (selectable per instrument) special comfort. The swing-arm clamps are optimally balanced. In addition, the low table height reduces the risk of interference with the operating light or other devices.



# Your patients will love you for it.

## A personal touch, add colour to your practice.

The KaVo colour scheme offers maximal versatility to suit your individual preferences and style and comes into it's own with the bright dental white of the unit body.



*Upholstery colours*

## Perfect position for your patients.

Your patient is positioned in a comfortable supine position. The benefit to you: This allows you to work much more efficiently and to fully focus on the treatment at hand. Allowing heavier patients to be positioned safely and comfortably on the patient chair.

Your working posture is comfortable and relaxed as well thanks to the flexible adaptable height of the patient chair – between 350 mm and 830 mm – ensures that you work ergonomically in all treatment positions.

The soft upholstery provides excellent comfort for patients.



*The soft cushion is both ergonomic and comfortable to use by your patients.*



*The 2-joint headrest can be adjusted rapidly and flexibly with just one simple motion.*

*Your patient chair can be adjusted optimally for all treatment scenarios between a lowest position of 350 mm and a highest position of 830 mm.*



# Your assistant will fall in love with the E30 too.

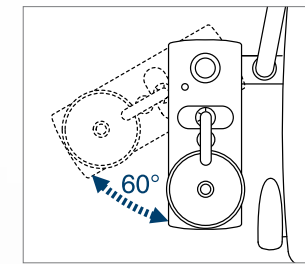
## Go hands-free with the KaVo foot control.

Benefits of the multifunctional KaVo foot control: safe and hygienically focused for efficient working technique. Easy and ergonomic to use, you operate the foot control via right/left movement. Allowing you to focus on your work whilst your legs rest in a comfortable position.

Control all chair and handpiece functions by foot – Freeing your hands to work at the patients mouth in a focused and hygienic manner.



*Ergonomically and relaxed thanks to the right/left movement.*



*The compact swivelling body of the device allows your assistant to have better access to the patient. And the (optional) swivelling spittoon – by approx. 225° – increases the comfort for your patients as well.*

## Your assistant has everything under control and everything is within reach rapidly and safely.

Its large swivelling range makes the assistant element of the KaVo ESTETICA E30 always easy to reach and ensures a comfortable and trouble-free working technique.

The compact body of the device that can be swivelled by 60° affords your assistant optimal and ergonomically healthy access to the patient at all times.



*The assistant element – easy to use through clearly arranged functions and direct selection buttons.*





# Completely clean ...

## Cleanliness, at all times.

Thorough and safe cleaning of your KaVo ESTETICA E30 is easy. Many components being removable, such as spittoon bowl, swing arm and silicone pad, are important factors for rapid and improved hygiene. Easy filter replacement and easily cleaned surfaces ensure the efficiency of hygiene and afford significant time saving.



Safe permanent germ reduction through water bottle and KaVo OXYGENAL 6.



Well packaged: Safe hygiene with the additional intensive germ reduction solution.



Disinfection without compromise afforded by removable components, such as, e.g., silicone pad, handpiece holders, and spittoon bowl and easy filter change.

## Ambitious goals for your office hygiene.

The KaVo ESTETICA E30 meets the strict DVGW requirements. The permanent germ reduction function with water bottle and KaVo OXYGENAL 6 ensures hygienic safety in daily operation. For even more hygiene use the additional integrated manual germ reduction solution. Used in combination, the two functions ensure permanent reduction of pathogens.

## For the sake of the environment - efficient cleaning and disinfection with DEKASEPTOL.



The biologically degradable DEKASEPTOL disinfection gel is an efficient and reliable means for daily hygiene of the suction systems.

### Hygiene functions – Your advantages at a glance:

- Assured hygiene every day with no time expenditure through the reliable hygiene functions for permanent germ reduction
- Reliable hygiene even after prolonged downtimes thanks to intensive germ reduction
- Removable parts for faster and improved hygiene

# ... fully protected.

## Features an anti-retraction system against cross-contamination.

To prevent contaminated water from being drawn back into your KaVo ESTETICA E30, all KaVo handpieces and motors have an intelligent, anti-retraction prevention system. This reliably protects your entire water supply and hence you, your team and your patients.

## Always up-to-date.

Its sophisticated, modern technology make the KaVo ESTETICA E30 a profitable investment – now and in the future. To keep your KaVo ESTETICA E30 software up to date, updates or expansions can be uploaded efficiently and economically via central software update.

## Perfect protection of your investment at all times.

The high quality of its components, its flexibility and the efficient service functions ensure the long-lasting safe service life of the KaVo ESTETICA E30. The KaVo ESTETICA E30 can be equipped for central management through connection to a server. Save valuable time in case of failure and enjoy the advantages of preventative maintenance.

## Made in Germany – that's what you can count on.

Play it safe with the KaVo ESTETICA E30 and rely on the "Made in Germany" quality.

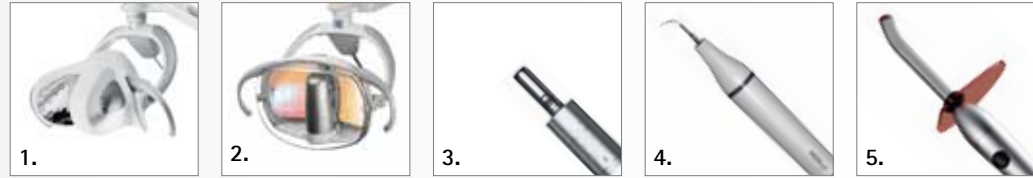


## The Essential line – efficiency and reliability.



### Excellence is mandatory!

Nycole Starenka has very high expectations of her dental equipment but as she's just starting out, she has to keep a close eye on costs. That's why she has decided on the KaVo ESTETICA E30 and its Essential configuration. This will mean she can work efficiently and reliably from the very start and offer her patients maximum professionalism.



With the Essential configuration for your KaVo ESTETICA E30 you opt for an efficient and professional solution for your dental practice.

#### 1. Operating light MAIA LED

- Modern LED technology for natural colour perception
- Flexible, easy positioning
- Luminous intensity up to 35,000 Lux with infinitely dimmable light intensity

#### 2. Operating light EDI

- Tried and tested halogen technology for consistently good vision
- Evenly illuminated field
- Luminous intensity of up to 25,000 Lux with infinitely dimmable light intensity

#### 3. Micromotor INTRA LUX KL 701

- Economical, comfortable operation thanks to compact design and low weight
- Maintenance-friendly motor concept without collectors for high reliability

#### 4. PIEZOsoft Scaler

- Innovative ultrasound technology for optimum treatment results
- Highly precise, effective dental cleaning by controlled linear vibrations
- 3 Different tips available

#### 5. Curing light Poly One

- Modern LED technology with a light output of 600 mW/cm<sup>2</sup>
- Adjustable lighting duration

#### 6. Triple function handpiece One

- Cannula removable and sterilisable



## The Evolution line – comfort and innovative technology.



### A multi-tasking chair concept!

Dr. Juan Guilherme Gonzales has decided on the Evolution configuration of the KaVo ESTETICA E30 for his practice. That's because it will allow him to offer his patients crucial added value: reliable and comfortable dental treatment with state-of-the-art technical equipment.



The Evolution configuration of your KaVo ESTETICA E30 has a range of features designed to make it future-proof.

#### 1. Operating light KaVoLUX 540 LED

- Maximum-quality natural white light owing to a unique optical system with varicoloured LED's with up to 40,000 Lux
- Uniform light field, precisely defined and shadow-free, with an individualised light colour
- Strongly delayed hardening of the filling material with the innovative COMPOSsave mode

#### 2. Micromotor INTRA LUX KL 703 LED

- Comfortable, fatigue-free work due to 30 % reduced weight\*
- Optimum handling due to perfectly balanced centre of gravity (25 % more compact design\*)
- Maintenance-friendly motor concept without collectors as well as LED technology for a long service life
- Endo mode can be optionally integrated for an improved workflow

\* compared to the INTRA LUX KL 701

#### 3. PiezoLED scaler

- Innovative ultrasound technology for optimum treatment results
- Highly precise, effective dental cleaning by controlled linear vibrations
- Intelligent feedback function for controlled power output
- Modern LED technology
- 4 Different output curves especially for endo treatment
- Comprehensive tip assortment

#### 4. Curing light Satelec MiniLED

- Modern LED technology with a light output of about 1,300 mW/cm<sup>2</sup>
- 3 Different programmes: standard, pulse mode and soft start

#### 5. Triple function handpiece

- Cannula and gripping sleeve can be removed and sterilised
- Optimum handling



# KaVo ESTETICA® E30 Options.

	TM	S		TM	S
<b>Patient chair</b>			<b>Assistant element</b>		
Soft upholstery	●	●	with Comfort control module	●	●
Trendelenburg movement	○	○	Venturi spray mist suction	○	○
<b>Backrest</b>			Venturi saliva ejector	●	●
Backrest Progress	●	●	Spray mist suction	●	● <sup>1</sup>
<b>Headrest</b>			Saliva ejector	●	● <sup>1</sup>
Doublejointed headrest rotary knob	●	●	Triple function handpiece One	○	○
<b>Arm rest</b>			Triple function handpiece	○	○
Left	●	●	Curing light Poly One	○	○
Right	○	○	Curing light Satelec MiniLED	○	○
<b>Dentist element</b>			Support for tray holder	○	○
1st LUX turbine tubing	○	○	Swivelling assistant element	●	●
1st Micro motor INTRA LUX KL 701	○	○	<b>Device body</b>		
1st Micro motor INTRA LUX KL 703 LED	○	○	Porcelain spittoon bowl	●	●
Triple function handpiece One	●	●	VACUstop	●	● <sup>2</sup>
Triple function handpiece	○	○	Permanent germ reduction	●	● <sup>3</sup>
2nd LUX turbine tubing	○	○	Intensive germ reduction bottle, manual	●	●
2nd Micro motor INTRA LUX KL 701	○	○	Swivelling spittoon	○	○
2nd Micro motor INTRA LUX KL 703 LED	○	○	Warm water heater	○	○
SMARTdrive	●	●	Bottle cover	●	●
Integrated torque control (Endo)	○	○	<b>Supply system</b>		
PIEZOSOFT Scaler	○	○	Water block, compact	●	●
PiezoLED Scaler	○	○	DVGW water bottle	x	x
Small X-ray image viewer	○	○	<b>Disposal system</b>		
Tray holder for US tray	x	x	Venturi suction system	x	x
Tray holder for single standard tray	x	x	Wet suction with direct outflow	x	x
Tray holder for 2 standard trays	x	x	External wet suction	x	x
			<b>Miscellaneous</b>		
			Right/left convertible	○	○
			Centralised software update	●	●
			EDI operating light	○	○
			MAIA LED operating light	○	○
			KaVoLUX 540 LED operating light	○	○
			Operating light mounting post	○	○
			Patient service box	○	○
			DEKASEPTOL Gel	○	○
			Hygiene package	○	○

● Standard    ○ Optional    x Must be selected

- 1 With wet suction with direct outflow and external wet suction
- 2 With venturi and external suction system
- 3 With DVGW Water bottle



KaVo. Dental Excellence.